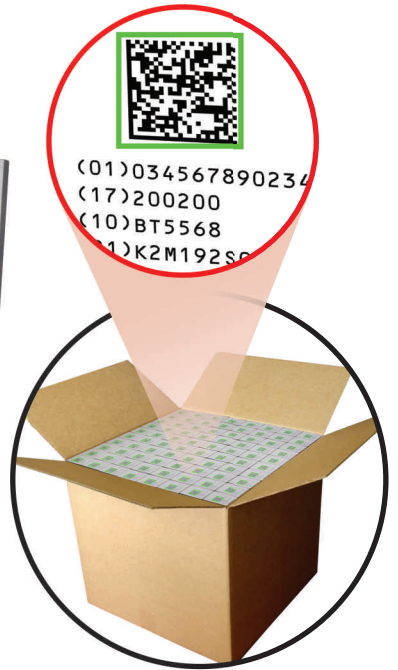


Top Manual Aggregation System

CSPL 1800
AGGREGATION



Specific requirements for Global Serialisation as per GS1 in the Pharmaceutical Industry, require a Variable Data Printing solution. CSPL culture has been shown in our solutions, built with the standards of GMP. Data security is our prime focus, where we follow the guidelines of 21 CFR Part 11 and Barcode Reading Tools follow the ISO Standards of 15415 & 15416.

CSPL 1800 "Case Aggregation System" high precision multilayer aggregation system to fulfil all requirements for global serialization of track and trace.

Powerful construction makes easy to handle heavy shipper cartons of almost all sizes used in Pharma Industry. Specially designed heavy duty top platform to glide heavy duty boxes. Auto focussed vision system can take care of packing up to 5 level in shipper.

Edge over advantages are strong front-end, allows to adjust the focus of vision system without any manual intervention for case size and a number of layers in the case. This facilitate the minimum change over time.

Inbuilt De-Aggregation, Samples after Quarantine, Partial Shipper Closer, Label Printer and verification, adjustable height and many such advantages are the points which are usually taken for granted. Redundancy scanner is a key handy tool to ensure productivity in emergency.

Technical Specification

Compliance to	: CE directives. 21 CFR part 11
System unit dimensions	: Length 2000 mm Width 760 mm Height 2250 ± 50 mm
Working height	: 800 mm ± 50 mm
Weight	: 180 kg. (approx.)
Working direction	: Left to right
Machine construction	: Non-corrosive pharma standard
Mountings	: Integrated motorized mounting bracket for vision camera positioning
Emergency operation	: Switch on front panel. Hardware controlled emergency stop function
Multilayer aggregation support	: Up to 5 layer

Connection / Input & Output

External connection	: Main power, Air pressure & LAN
Electrical connection	: Voltage: 230 VAC (± 10%)
Frequency	: 50 / 60 Hz
Machine controller	: PLC
Input / Output	: 18 Input & 12 Output

Printing System

Technology	: Direct thermal or thermal transfer
Print height	: 104 mm
Resolution	: 300 dpi
Number of prints/Min	: 60

Vision System

Camera & lens resolution	: Camera - 42 megapixel and inbuilt - Lens resolution
Inspection area	: 450 (H) x 550 (W)mm
Light	: Integrated light shielding
Verification	: 1D & 2D codes
Data matrix standard	: According to GS1 and ISO/IEC 16022
Multiple barcode reading	: Within FOV up to 200

Salient features

- QC sampling
- De-aggregation
- Replace UID
- Re-print label
- Redundancy scanner

Production

Reading position	: From top with multilayer support
Throughput	: 50 Scan / Min.
Precise position	: Algorithm, inbuilt for auto positioning of camera and light
Display	: 17" Touch monitor
Software	: CSPL 1800 GUI to control all parameters and to comply 21 CFR Part 11

Interlocking

- Emergency stop
- Drive failure

Report Output

Batch summary report, Batch detail report, Audit trail report, Alarm log report, Sample report

USP of the System

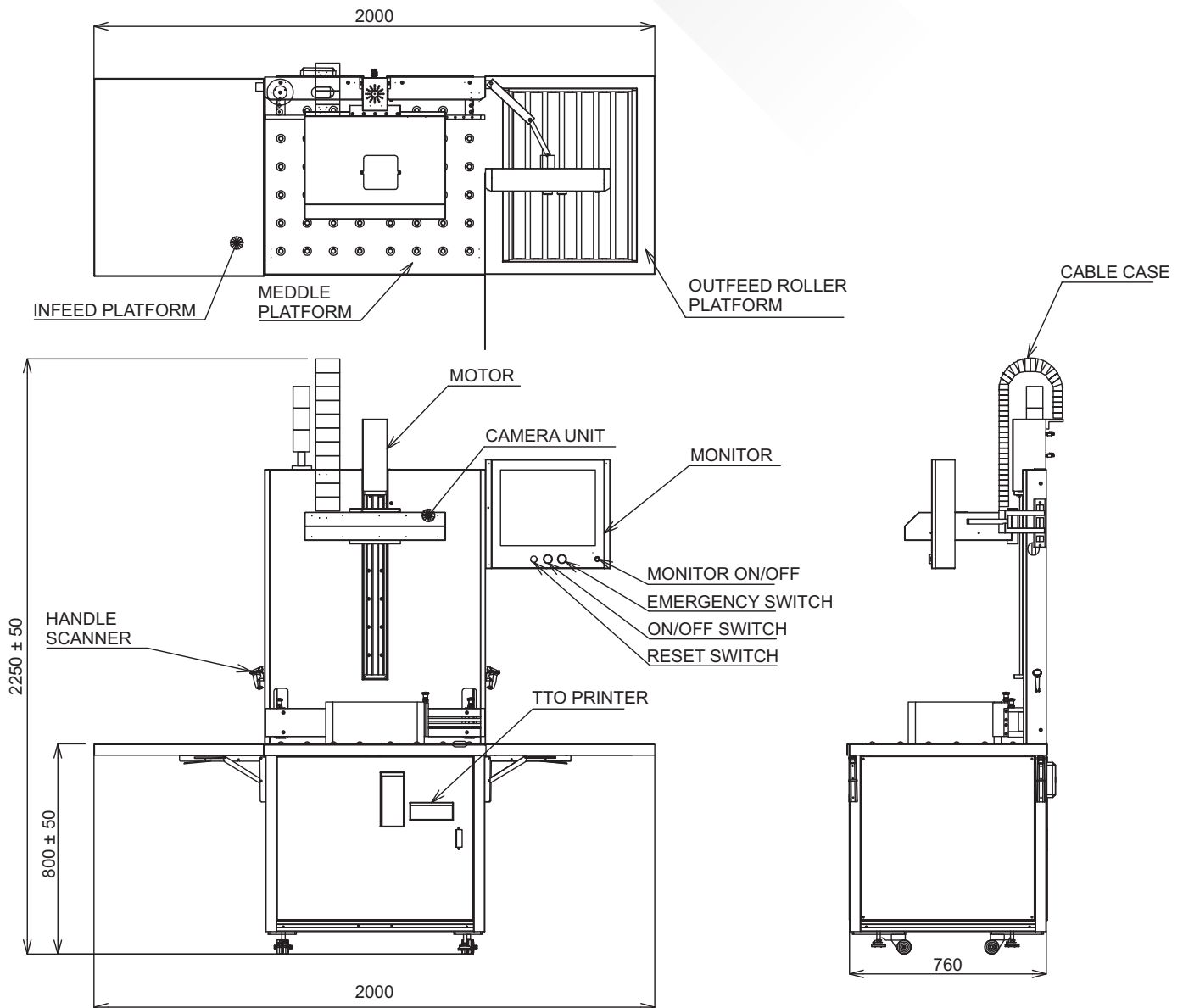
- Auto focus vision base camera system for multilayer reading
- No need to set the camera for every batch

Convincing Highlights

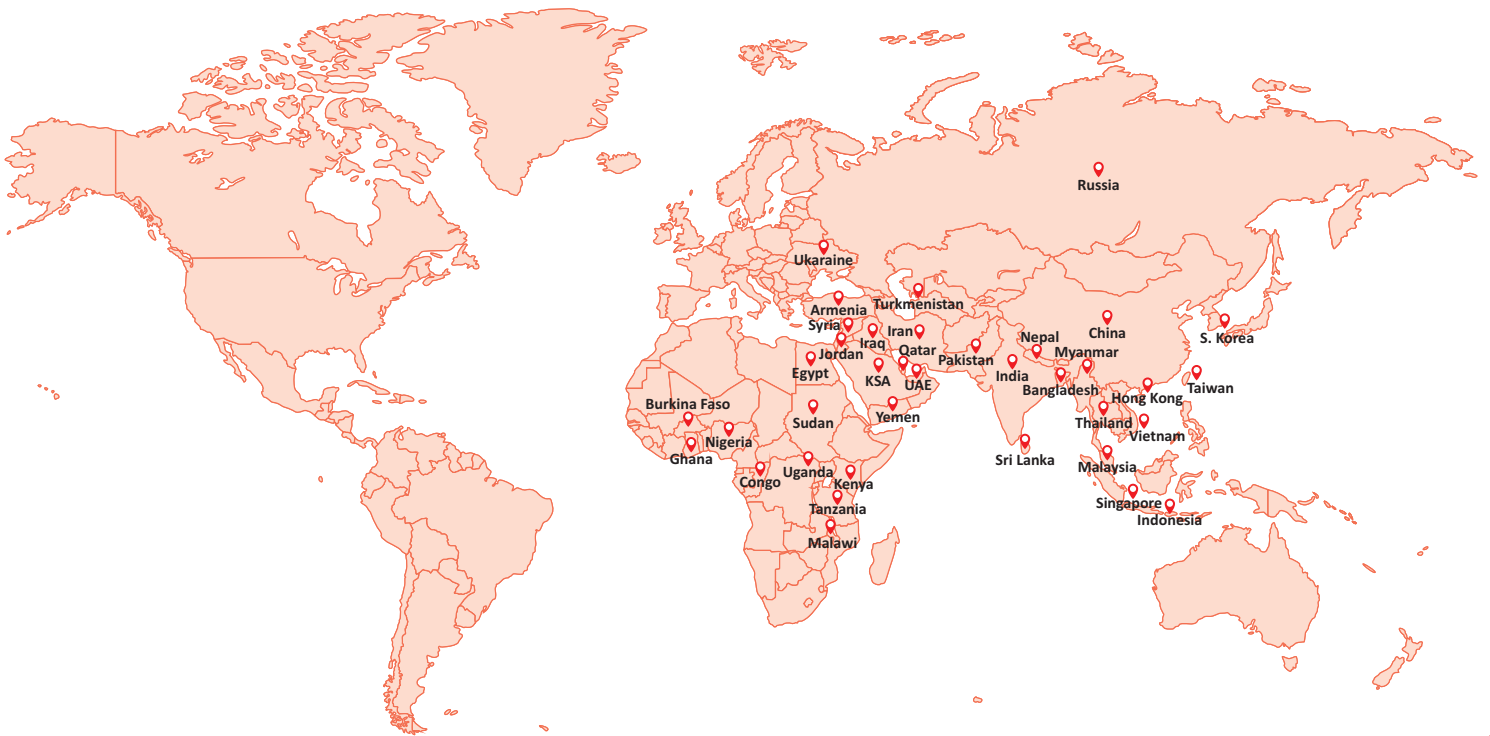
- Simple flexible ergonomic concept design for offline manual aggregation
- Collapsible In-feed & Out-feed tables
- Ball transfer platform for easy handle of heavy shippers
- Out-feed roller conveyor to transfer the boxes for further process
- Single vision system with inbuilt light source

- No need of multiple camera systems and hi-end processor
- Product changeover takes less than 5 minute
- No need to re-calibrate barcode at product changeover
- Auto focus camera for all size of products within the FOV
- Multilayer aggregation support
- Configurable recipe counts
- Aggregation after generating co-relation between outsert and bottle label in bulk drug line
- EPCIS compatibility
- Exhaustive validation documentation as per GAMP5
- Industry accepted yet customer required design of report generation
- 21 CFR Part 11 compliance

GA Drawing



Global Presence



CONDOT[®]
SYSTEMS PVT. LTD.

Head Office

Unit No. 122, Niraj Indl. Estate, Off. Mahakali Caves Road, Andheri (E), Mumbai - 400 093.

Phone : +91-22-2687 7023 Fax : +91-22-2687 9078 Delhi : +91-11- 22015055 / 22455850

Email : cspl@condotsystems.com Web : www.condotsystems.com