

KGK JET HQ2100



Printing height from 2 mm to 20 mm
Piezo ceramics drop-on-demand print system

<http://www.kishugiken.co.jp/>

Great inkjet printer with an affordable price.
Simple and economical model is now available!

● **Lightweight - 3 Kg**



● **Simple compact design easy to use**

- Large LCD screen for clear display
- Operational buttons are colour coded, easy to use and edit printing content
- All-in-one design printer for easy and practical usage
- Compact design for easy installation in production line

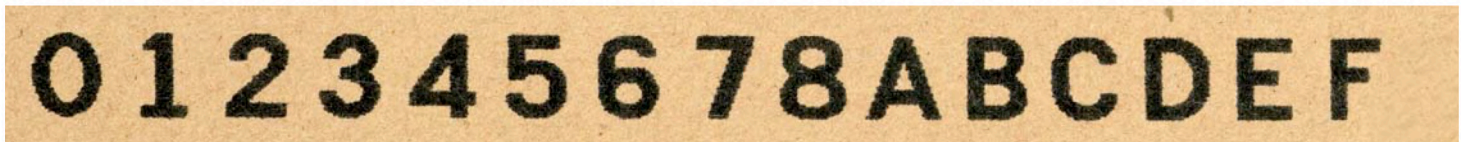
● **Great features with an affordable price**

- Master slave function that can control 2 units at the same time
- Backup and restore data from/to computer (with comm cable and software)
- Data transfer from printer to printer with comm cable
- Numbering, date and calendar, and other printing features

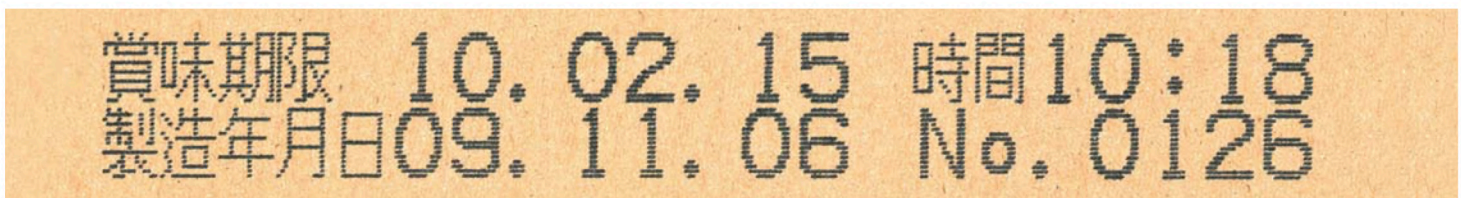
● **Reliable KGK in-house development**

- Equipped with in-house print head developed by KGK
- Use in-house ink developed fully by KGK
- Ink bottle protection mechanism to prevent wrong ink when using different types of ink

● **Printing sample** 10 mm height (1 line)



20 mm height (2 lines)

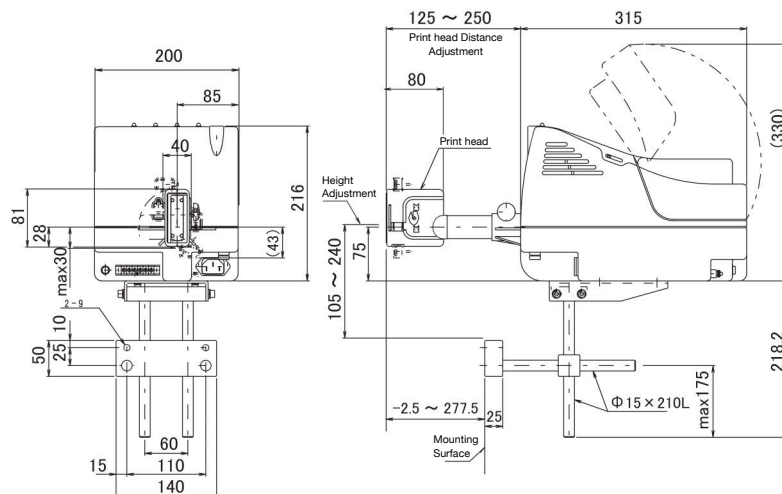


● General Specification

Specification	HQ2100
Printing System	Piezo ceramics on demand
Printing Speed	120 meter/minute (density 1) to 20 meter/minute (density 9)
Nozzle	32 nozzles (2 holes/nozzle)
Printing Direction	Sideway
Printing Height	2 - 20 mm
Number of Print head	1 print head
Ink Type	CK Black, CK Red
Sensor	Photoelectric Sensor (internal head sensor or external sensor)
Number of Print Lines	1 line (32 x 32 dots), 2 lines (16 x 16 dots)
Number of Registered Messages	30 messages
Number of Char Per Message	48 characters
Character Type	Alphanumeric, symbols, katakana, kanji (48 characters), user registered characters (180 characters)
Character Font	16 dots font is available in bold or regular
Date / Time	Year (Western, Japanese), month, day, hour (12/24h), minute, free format, offset value, calendar character replacement
Numbering	Up to 8 digits, up / down, increment settings
Barcode	Not available
Logo	Not available
External Interface	I/O: 3 output points (ready, ink low, alarm) RS-232: used for data backup / restore, software update
Usage Environment	5 - 35 °C, 10 - 80% humidity (no condensation)
Power Supply	AC 220-240 V, 50/60Hz, 40 Watt or less
Ground	Class D ground

● Product Dimension (in mm)

Product weight 3 Kg (not including bracket stand)



Please note product specifications and dimensions may change prior or without notice