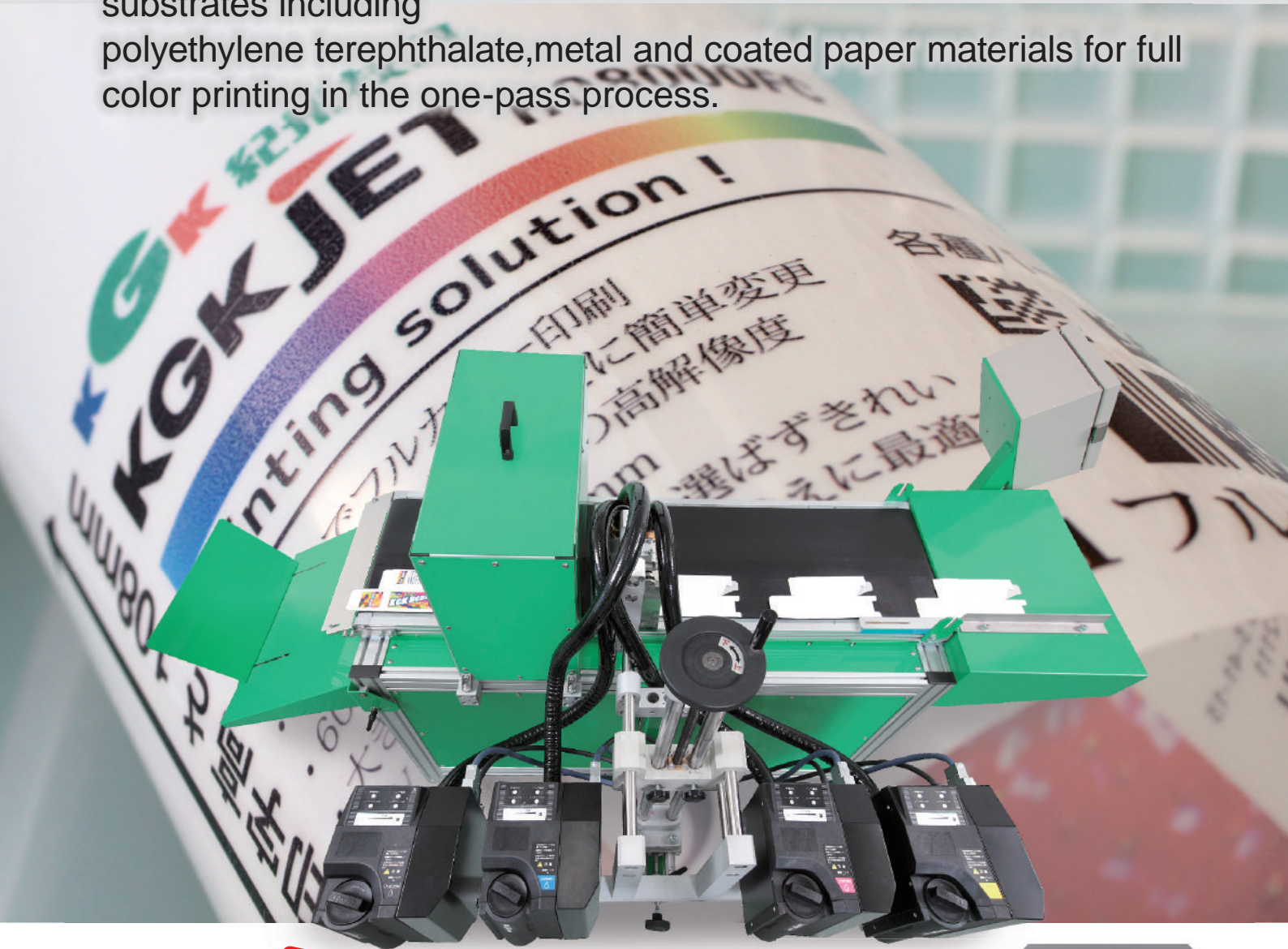


Full Color Printing System

Introducing KGK's ultraviolet ray curing ink for printing on various substrates including polyethylene terephthalate, metal and coated paper materials for full color printing in the one-pass process.



KGK JET HQ8500FC Fullcolor printing system Industrial Inkjet Printer

It uses a high resolution printheads for brightly colored printing various bar codes and bmp format images.



- It uses the in-house developed ultraviolet ray curable ink.
- Printing takes place in the one-pass process.
- Print height of 108mm
- Four printheads of 600 dpi resolution to print C,M,Y and K colors.
- The ink will be instantly cured to realize very high production efficiency.
- Best suited to replace conventional label or seal application system.



▲ Monitor controller

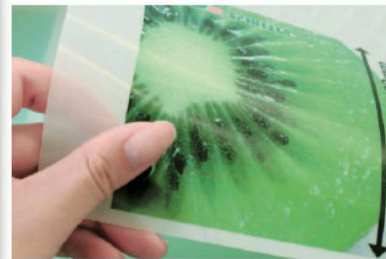
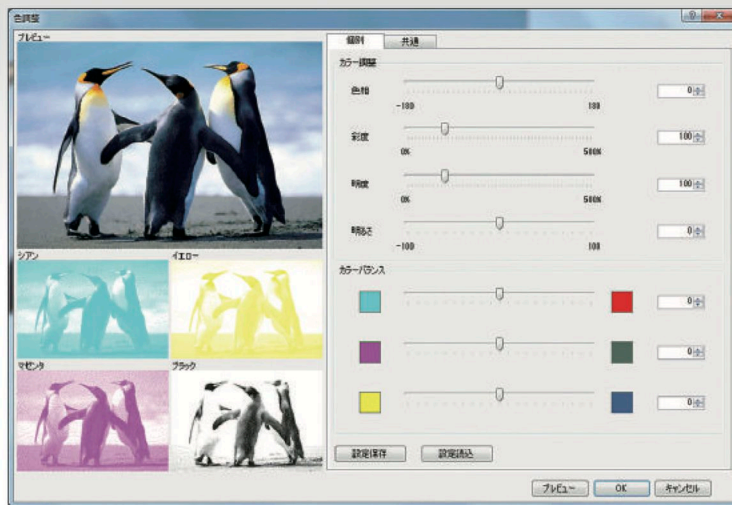
Printing even on non-porous substrate materials has now no problem with our ultraviolet ray curable ink.



- Curing the ink takes place instantly just after printing by irradiating the ultraviolet LED ray source. Thus, it provides you with very high productivity.
- Please be assured that the ink curing generates no ozone gas thus our system is very environmentally friendly.
- This ink has been coated with very the flexible property membrane to assure flexural strength providing very high definition prints.
- This ink uses no solvent, thus very friendly to the environment.

See below for the color adjustment.

Easy to make color adjustment as you operate it watching the image in the bmp form on the monitor.



Specifications

HQ8500FC	
Printing system	Piezo ceramic driven drop on demand system
Printing speed	Max. 30 meters/min. * The speed varies depending on the printing conditions.
Nozzle arrangement	2,558 nozzles and 600 dpi resolution
Ink jetting directions	Traversal or downward
Print size	Up to 108 mm vertical x 2,100 mm horizontal for 600 dpi resolution
Number of the printheads	One head for each of C,M,Y and K
Number of lines to print	Any will do except for limited font sizes within 2,558 dots in total
Number of messages to register	Up to 9,999 messages
Printable characters	Alphanumerical, symbols, Japanese Hiragana, Katakana and Kanji
Fonts	Fonts in the Windows specifications
Date, time printing	Year in Christian calendar or Japanese calendar, month, date, time (12/24 hrs., min., sec. and days of the week)
Numbering	Up to 10 digits, counting up and down, repetition, addition settable, zero suppression, character substitution settable
Bar code	ITF, Code39, Code128, NW-7, JAN/EAN, GS1 DataBar
2D code	QR, DataMatrix, PDF417
Graphics	Files of bmp, jpg and png readable
External interface	USB, digital I/O, rotary encoder, RS-232C or LAN
Operational environment	Temperature: 5 to 35 degrees C. and 10 to 80%RH with no dew condensation
Power source	AC 100V±10%, 50/60Hz and 1,000 W or lower



<http://www.kishugiken.co.jp/ew/>



PT. WIRIAWAN INGENIOUS SOLUTION

Jl. Kebon Jeruk Raya No. 15, Jakarta Barat – Indonesia 11530
 TELP: +6221 5363995 HOTLINE: +62 8818801032, +62 8811091308, EMAIL: info@wins-co.biz WEB: www.wins-co.biz